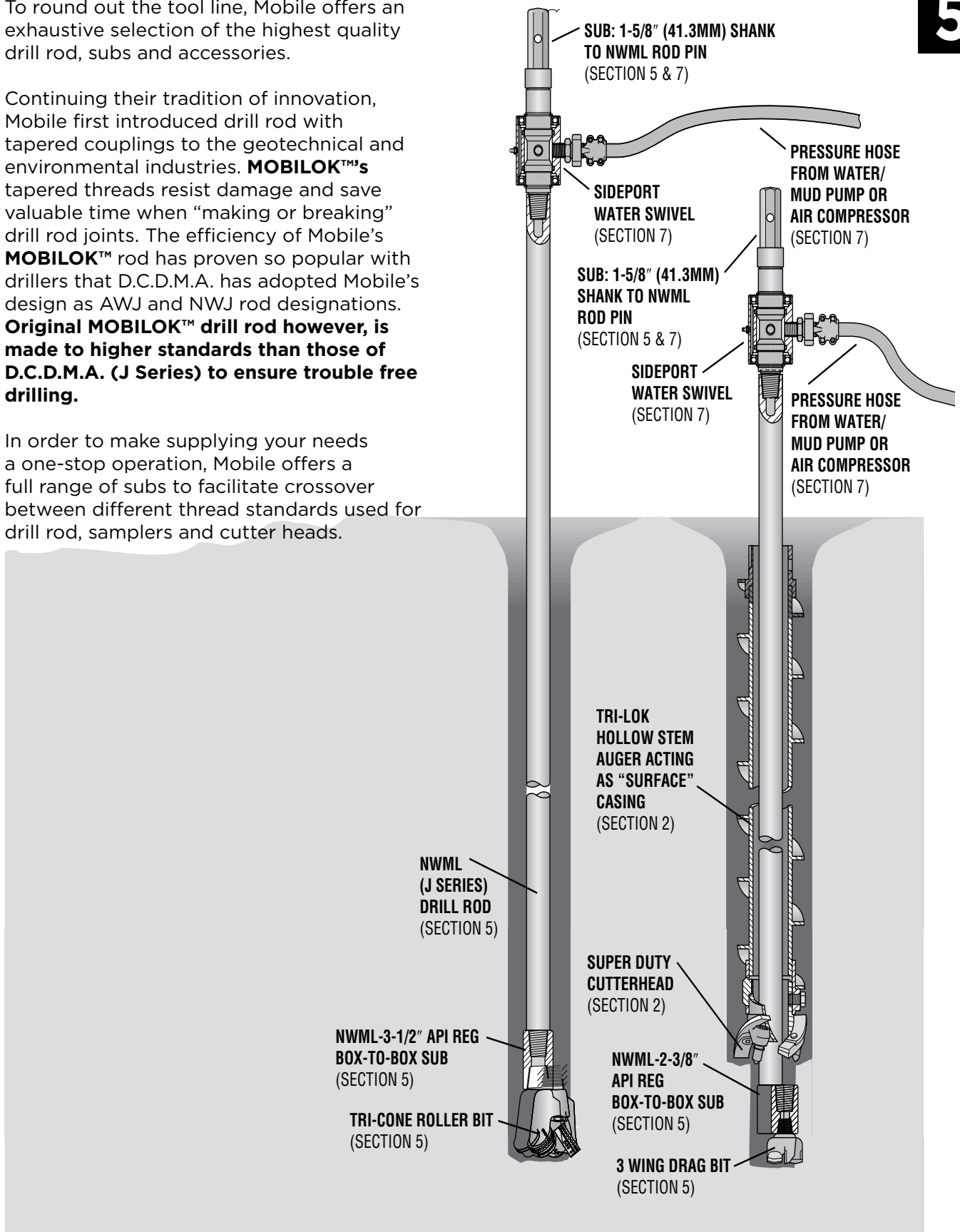


To round out the tool line, Mobile offers an exhaustive selection of the highest quality drill rod, subs and accessories.

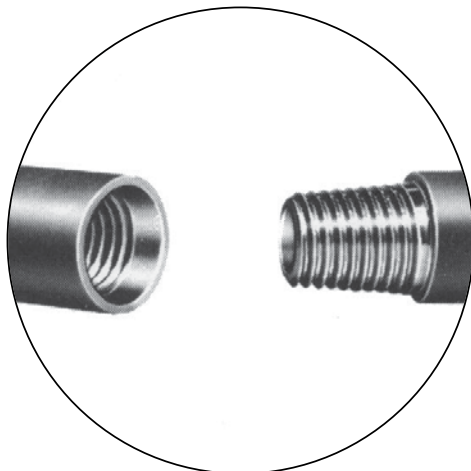
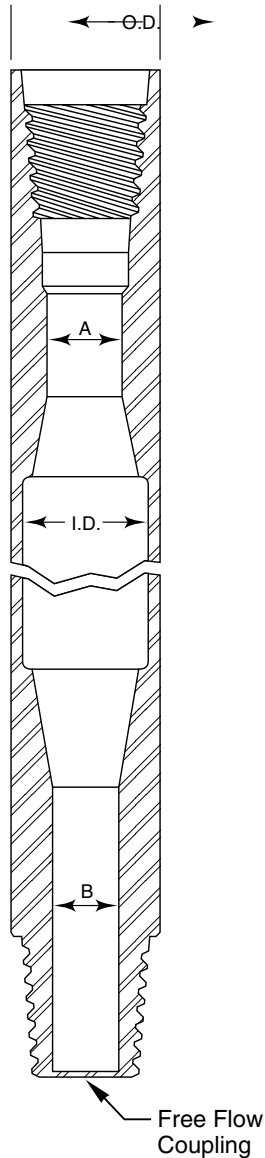
Continuing their tradition of innovation, Mobile first introduced drill rod with tapered couplings to the geotechnical and environmental industries. **MOBILOK™s** tapered threads resist damage and save valuable time when “making or breaking” drill rod joints. The efficiency of Mobile’s **MOBILOK™** rod has proven so popular with drillers that D.C.D.M.A. has adopted Mobile’s design as AWJ and NWJ rod designations. **Original MOBILOK™ drill rod however, is made to higher standards than those of D.C.D.M.A. (J Series) to ensure trouble free drilling.**

In order to make supplying your needs a one-stop operation, Mobile offers a full range of subs to facilitate crossover between different thread standards used for drill rod, samplers and cutter heads.



Key: * Designates weights less than 1 lb (.5kg)

†Consult Factory



MOBILOK™ DRILL ROD & WIPER

MOBILOK™ drill rod (adopted by D.C.D.M.A.1 as AWJ & NWJ) is a **MOBILE DRILL®** innovation designed to withstand the most rigorous drilling operations including deep hole rotary drilling, coring and drive sampling. Exceeding D.C.D.M.A. standards, it has a flush outside diameter for use with any standard chuck and the rod wall and coupling are designed to maintain a high degree of concentricity throughout the drill string. The internal diameters are turned smoothly, without corners to ensure the free flow of air and water. **MOBILOK™** tapered threads resist damage and save valuable time when **“making or breaking” joints - 1-1/2 turns** make and break a joint. Constructed of **AISI 4140 steel**, they are heat treated for durability and inertia-welded to the rod to provide an extremely strong, high quality joint. **The rod is manufactured from AISI 1040 steel with a 100,000 psi yield point.** Available in AW and NW sizes.

¹ Diamond Core Drill Manufacturer's Association

Drill Rod	O.D.	Bore "A"	Bore "B"	Thds/In
AWML	1-3/8" (35mm)	5/8" (16mm)	5/8" (16mm)	5
NWML	2-5/8" (67mm)	1-3/8" (35mm)	1-1/8" (29mm)	5

AWML ROD: 1-3/4" (45MM) O.D.

Description	Lb/Kg	Part No.
1'0" (305mm).....	3 (1.4).....	006280
2'0" (610mm).....	6 (2.7).....	007086
2'6" (762mm).....	10 (4.5).....	150416
3'0" (914mm).....	11 (5.0).....	006863
5'0" (1.5m).....	20 (9.1).....	006276
10'0" (3.1m).....	32 (14.5).....	006277

NWML ROD: 2-5/8" (67MM) O.D.

Description	Lb/Kg	Part No.
1'0" (305mm).....	7 (3.2).....	006281
2'0" (610mm).....	15 (6.8).....	007087
2'6" (762mm).....	13 (5.9).....	180386-13
3'0" (914mm).....	18 (8.2).....	006734
5'0" (1.5m).....	30 (13.6).....	006278
10'0" (3.1m).....	60 (27.2).....	006279

DRILL ROD WIPER

Rubber drill rod wiper is used as a circular squeegee to remove soil, mud or water from drill rods. They may also be used to deflect grit when air drilling or located above the automatic chuck to protect the jaws from mud loading. The most common position is at the hole collar allowing all rods to be drawn through the wiper when round-tripping the bit or sampler.

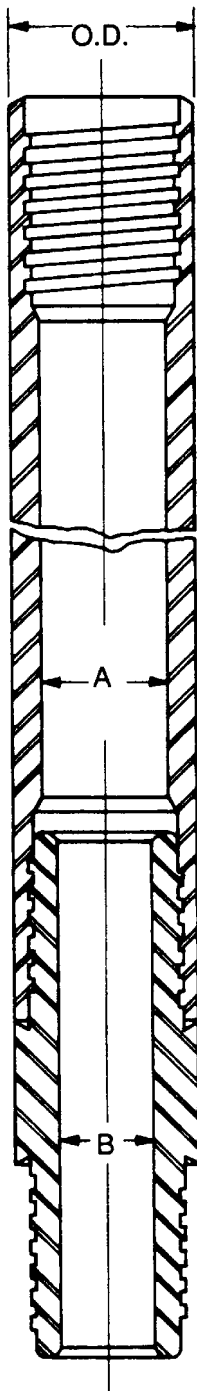
FLAT DRILL ROD WIPER: 9" (229MM) O.D.

Description	Lb/Kg	Part No.
1-5/8" (41mm).....	4 (1.8).....	3523-0001
1-3/4" (44.5mm).....	4 (1.8).....	3523-0002
1-7/8" (48mm).....	4 (1.8).....	3523-0003
2-1/8" (54mm).....	3 (1.4).....	3523-0004
2-3/8" (60mm).....	3 (1.4).....	3523-0005
2-5/8" (67mm).....	3 (1.4).....	3523-0006
2-7/8" (73mm).....	3 (1.4).....	3523-0007
3-1/2" (89mm).....	3 (1.4).....	3523-0008
4" (102mm).....	3 (1.4).....	3523-0009
4-1/2" (114mm).....	3 (1.4).....	3523-0010

D.C.D.M.A.¹ DRILL ROD

Manufactured to D.C.D.M.A. standards. Drill rod sizes are identified by rod size letter designations.

¹ Diamond Core Drill Manufacturer's Association



Threaded
Pin to Pin
Coupling
(reverse when
exposed threads
are worn.)

Drill Rod	O.D.	Bore "A"	Bore "B"	Thds/In
AW	1-3/4" (44.5mm)	1-3/8" (35mm)	5/8" (16mm)	3
EW	1-3/8" (35mm)	15/16" (24mm)	7/16" (11mm)	3
NW	2-5/8" (67mm)	2-1/4" (57mm)	1-3/8" (35mm)	3

AW ROD: 1-3/4" (44MM) O.D.

Description	Lb/Kg	Part No.
1'0" (305mm)	4 (1.8)	001597
2'0" (610mm)	9 (4.1)	001601
3'0" (914mm)	12 (5.4)	005195
5'0" (1.5m)	22 (10)	001605
10'0" (3.1m)	38 (17.2)	001610

EW ROD: 1-3/8" (35MM) O.D.

Description	Lb/Kg	Part No.
1'0" (305mm)	4 (1.8)	001596
2'0" (610mm)	7 (3.2)	001600
3'0" (914mm)	11 (5)	005193
5'0" (1.5m)	15 (6.8)	001604
10'0" (3.1m)	31 (14.1)	001609

NW ROD: 2-5/8" (67MM) O.D.

Description	Lb/Kg	Part No.
1'0" (305mm)	11 (5)	005199
2'0" (610mm)	15 (6.8)	001603
3'0" (914mm)	22 (10)	007083
5'0" (1.5m)	32 (14.5)	001608
10'0" (3.1m)	55 (24.9)	001613

Note: Pin to pin coupling included with all drill rod.

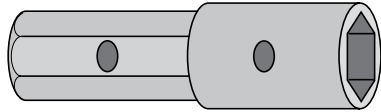
Key: * Designates weights less than 1 lb (.5kg)

† Consult Factory

5 ADAPTERS

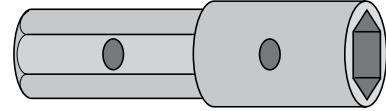
Adapters allow interchange of various augers on any machine. Additional subs and adapters can be furnished on special order.

ADAPTER: HEX SHANK TO HEX BOX



Description	Lb/Kg	Part No.
13/16" (21mm) Hex to 1-1/8" (29mm) Box.....	2 (.9)	001550
13/16" (21mm) Hex to 1-5/8" (41mm) Box.....	4 (1.8)	004655
1-1/8" (29mm) Hex to 13/16" (21mm) Box.....	3 (1.4)	150131-01
1-1/8" (29mm) Hex to 1-5/8" (41mm) Box.....	6 (2.7)	001551
1-1/8" (29mm) Hex to 2" (51mm) Box.....	9 (4.1)	004641
1-5/8" (41mm) Hex to 13/16" (21mm) Box.....	4 (1.8)	150132-01
1-5/8" (41mm) Hex to 1-1/8" (29mm) Box.....	5 (2.3)	001552
1-5/8" (41mm) Hex to 1-5/8" (41mm) Box.....	9 (4.1)	150729
1-5/8" (41mm) Hex to 2" (51mm) Box.....	11 (5)	004643
2" (51mm) Hex to 1-1/8" (29mm) Box.....	11 (5)	004644
2" (51mm) Hex to 1-5/8" (41mm) Box.....	10 (4.5)	004645

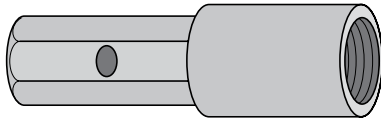
ADAPTER: HEX SHANK TO ROD PIN FOR SIDEPORT WATER SWIVELS



Description	Lb/Kg	Part No.
1-1/8" (29mm) Hex to AW Pin.....	4 (1.8)	004874
1-1/8" (29mm) Hex to AWML Pin.....	4 (1.8)	180078-01
1-1/8" (29mm) Hex to EW Pin.....	3 (1.4)	004872
1-1/8" (29mm) Hex to NW Pin.....	4 (1.8)	004878
1-1/8" (29mm) Hex to NWML Pin.....	4 (1.8)	180078-02
1-5/8" (41mm) Hex to A Pin.....	8 (3.6)	180080-03
1-5/8" (41mm) Hex to AW Pin.....	8 (3.6)	180080-02
1-5/8" (41mm) Hex to AWML Pin.....	8 (3.6)	180080-01
1-5/8" (41mm) Hex to BW Pin.....	9 (4.1)	180080-05
1-5/8" (41mm) Hex to EW Pin.....	8 (3.6)	180080-01
1-5/8" (41mm) Hex to NW Pin.....	10 (4.5)	004468
1-5/8" (41mm) Hex to NWML Pin.....	10 (4.5)	180080-05
2" (51mm) Hex to AW Pin.....	10 (4.5)	004906
2" (51mm) Hex to AWML Pin.....	10 (4.5)	180081-01
2" (51mm) Hex to NW Pin.....	12 (5.4)	004910
2" (51mm) Hex to NWML Pin.....	12 (5.4)	180081-02

Other sizes available upon request.

ADAPTER: HEX SHANK TO ROD BOX



Description	Lb/Kg	Part No.
13/16" (21mm) Hex to A Box.....	2 (.9)	001562
13/16" (21mm) Hex to AW Box.....	2 (.9)	001563
13/16" (21mm) Hex to AWML Box.....	2 (.9)	180011-08
13/16" (21mm) Hex to EW Box.....	2 (.9)	001557
1-1/8" (29mm) Hex to AW Box.....	3 (1.4)	001565
1-1/8" (29mm) Hex to AWML Box.....	3 (1.4)	180011-09
1-1/8" (29mm) Hex to NW Box.....	3 (1.4)	001577
1-1/8" (29mm) Hex to NWML Box.....	3 (1.4)	180012-11
1-5/8" (41mm) Hex to AW Box.....	4 (1.8)	001567
1-5/8" (41mm) Hex to AWML Box.....	4 (1.8)	180011-10
1-5/8" (41mm) Hex to NW Box.....	5 (2.3)	180007-01
1-5/8" (41mm) Hex to NWML Box.....	5 (2.3)	006925
2" (51mm) Hex to AW Box.....	7 (3.2)	004649
2" (51mm) Hex to AWML Box.....	7 (3.2)	180011-11
2" (51mm) Hex to NW Box.....	5 (2.3)	004653
2" (51mm) Hex to NWML Box.....	6 (2.7)	180012-12

Other sizes available upon request.

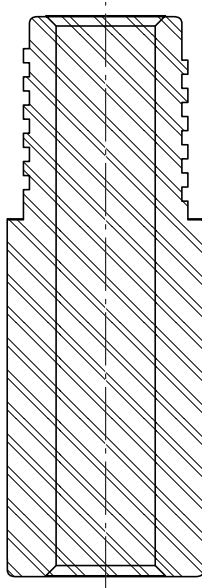
D.C.D.M.A. COUPLING

Manufactured to D.C.D.M.A. standards. Coupling sizes are identified by drill rod size letter designations.

D.C.D.M.A. COUPLING

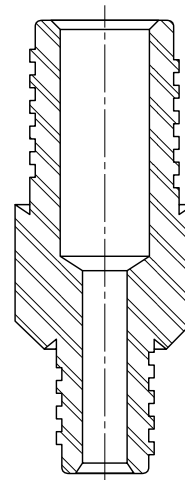
Description	Lb/Kg	Part No.
A Rod.....	2 (.9)	001616
AW Rod.....	2 (.9)	001617
B Rod.....	3 (1.4)	001618
BW Rod.....	4 (1.8)	001619
E Rod.....	1 (.5)	001614
EW Rod.....	1 (.5)	001615
N Rod.....	4 (1.8)	001620
NW Rod.....	6 (2.7)	001621

SUB: BLANK



Description	Lb/Kg	Part No.
AW Pin to Blank.....	2 (.9)	180045-00
NW Pin to Blank.....	4 (1.8)	180049-00
AW Box to Blank.....	2 (.9)	180087-00
NW Box to Blank.....	4 (1.8)	180091-00
AWML Pin to Blank.....	2 (.9)	180053-00
NWML Pin to Blank.....	4 (1.8)	180054-00
AWML Box to Blank.....	2 (.9)	180095-00
NWML Box to Blank.....	4 (1.8)	180096-00

SUB: ROD PIN TO ROD PIN

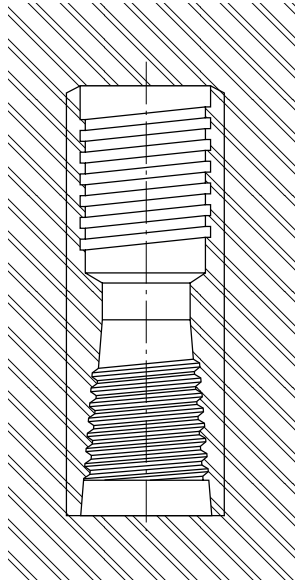


Description	Lb/Kg	Part No.
A Pin to NW Pin.....	6 (2.7)	001835
AW Pin to BW Pin.....	4 (1.8)	001842
AW Pin to E Pin.....	2 (.9)	001830
AW Pin to N Pin.....	5 (2.3)	180048-01
AW Pin to NW Pin.....	6 (2.7)	001843
AWML Pin to AW Pin.....	2 (.9)	006282
AWML Pin to NW Pin.....	6 (2.7)	180049-01
AWML Pin to AWML Pin.....	2 (.9)	180053-03
BW Pin to NW Pin.....	6 (2.7)	001844
N Pin to NW Pin.....	6 (2.7)	001838
NWML Pin to AW Pin.....	3 (1.4)	180054-07
NWML Pin to N Pin.....	6 (2.7)	180054-01
NWML Pin to NW Pin.....	6 (2.7)	006286
NWML Pin to NWML Pin.....	6 (2.7)	180054-05

Other sizes available upon request.

Continued on next page

SUB: ROD BOX TO ROD BOX

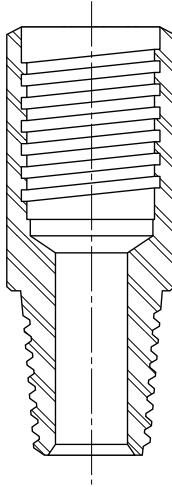


Description	Lb/Kg	Part No.
A Box to A Box	1 (.5)	001678
A Box to AW Box	2 (.9)	001698A
Box to N Box	5 (2.3)	001680
A Box to NW Box	5 (2.3)	001700
AW Box to AW Box	2 (.9)	001688
AW Box to BW Box	3 (1.4)	001689
AW Box to E Box	2 (.9)	001695
AW Box to NW Box	5 (2.3)	001690
AWML Box to 2-3/8" (60mm) API Reg Box	13 (5.9)	006930
AWML Box to 2-7/8" (73mm) API Reg Box	15 (6.8)	006932
AWML Box to 3-1/2" (89mm) API Reg Box	15 (6.8)	180011-01
AWML Box to A Box	2 (.9)	180095-01
AWML Box to AW Box	2 (.9)	180087-02
AWML Box to AWML Box	2 (.9)	180095-02
AWML Box to B Box	3 (1.4)	180088-01
SUB, AWML Box to N4THD Box	5 (2.3)	180090-01
AWML Box to NW Box	5 (2.3)	180091-01
AWML Box to NWML Box	5 (2.3)	180011-06
B Box to N Box	4 (1.8)	001682
BW Box to BW Box	3 (1.4)	001691
BW Box to NW Box	5 (2.3)	001692
E Box to E Box	2 (.9)	001674
E Box to EW Box	2 (.9)	001694
EW Box to EW Box	3 (1.4)	001684
EW Box to NW Box	5 (2.3)	001687
N Box to 2-3/8" (60mm) API Reg Box	11 (5)	001666
N Box to 3-1/2" (89mm) API Reg Box	19 (8.6)	001668
N Box to 4-1/2" (114mm) API Reg Box	31 (14.1)	001669
N Box to N Box	4 (1.8)	001683
N Box to NW Box	5 (2.3)	001703
NW Box to 2-3/8" (60mm) API Reg Box	11 (5)	001670
NW Box to 2-7/8" (73mm) API Reg Box	17 (7.7)	180109-01
NW Box to 3-1/2" (89mm) API Reg Box	18 (8.2)	001672
NW Box to NW Box	4 (1.8)	001693
NWML Box to 2-3/8" (60mm) API Reg Box	11 (5)	006934
NWML Box to 2-7/8" (73mm) API Reg Box	17 (7.7)	006936
NWML Box to 3-1/2" (89mm) API Reg Box	18 (8.2)	180110-02
NWML Box to A Box	5 (2.3)	180096-02
NWML Box to AW Box	5 (2.3)	180096-03
NWML Box to BW Box	5 (2.3)	180096-05
NWML Box to N Box	4 (1.8)	180096-01
WML Box to NW Box	4 (1.8)	180096-06
NWML Box to NWML Box	4 (1.8)	180096-08

Other sizes available upon request.

Continued on next page

SUB: ROD BOX TO ROD PIN



Description	Lb/Kg	Part No.
2-3/8" (60mm) API Reg Box To AWML Pin.....	8 (3.6)006931
2-3/8" (60mm) API Reg Box To NWML Pin	9 (4.1)180024-01
2-7/8" (73mm) API Reg Box To NWML Pin.....	14 (6.4)006937
A Box To AW Pin	2 (.9)001774
A Box To AWML Pin	3 (1.4)180002-02
A Box To E Pin.....	3 (1.4)001760
A Box To EW Pin	2 (.9)001773
A Box To N Pin	4 (1.8)001762
A Box To NW Pin.....	6 (2.7)001776
AW Box To A Pin	2 (.9)001801
AW Box To AWML Pin.....	3 (1.4)180003-01
AW Box To B Pin	2 (.9)001802
AW Box To Boyles NXWL (Christensen) Pin	7 (3.2)180003-03
AW Box To BW Pin.....	3 (1.4)001789
AW Box To EW Pin.....	2 (.9)001788
AW Box To N Pin	4 (1.8)180003-02
AW Box To NW Pin.....	5 (2.3)001790
AW Box To NWML Pin.....	5 (2.3)180003-08
AWML Box To A Pin	2 (.9)180011-01
AWML Box To AW Pin.....	2 (.9)180011-02
AWML Box To AWML Pin.....	3 (1.4)180011-21
AWML Box To Boyles AXWL (Christensen) Pin	2 (.9)180011-13
AWML Box To BW Pin.....	3 (1.4)180011-03
AWML Box To N Pin	4 (1.8)180011-04
AWML Box To NW Pin.....	5 (2.3)180011-05
AWML Box To NWML Pin.....	5 (2.3)180011-06
AWML Box To NXWL (Christensen) Pin.....	7 (3.2)179996
B Box To N Pin.....	4 (1.8)001765
BW Box To AW Pin.....	2 (.9)001792
BW Box To B Pin	3 (1.4)001804
BW Box To N Pin	4 (1.8)001805
BW Box To NW Pin.....	5 (2.3)001793
E Box To EW Pin.....	1 (.5)001769
E Box To NW Pin	6 (2.7)001772
EW Box To A Pin	2 (.9)001798
EW Box To AW Pin.....	2 (.9)001785
EW Box To AWML Pin.....	2 (.9)180001-03
EW Box To E Pin.....	1 (.5)001797
EW Box To NW Pin.....	6 (2.7)001787
N Box To 2-3/8" (60mm) API REG Pin.....	1 (.5)001704

Continued on next page

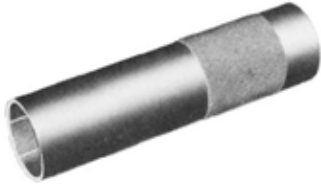
5

DRILL ROD RECOVERY TAPS

Recovery taps aid in the recovery of broken or lost **MOBILOK™** (D.C.D.M.A. "J Series") and standard drill rod. Outside type taps thread onto the outside diameter of the rod while the inside type engage the inside diameter.

Note: AW/AWML bell tap can only be used to recover AW or AWML drill rod in BX (65mm) or larger holes.

DRILL ROD TAP: OUTSIDE



Description	Lb/Kg	Part No.
AW Box (AW & AWML Rod).....	4 (1.8)	180202-02
NW Box (NW & NWML Rod).....	9 (4.1)	002248

DRILL ROD TAP: INSIDE



Description	Lb/Kg	Part No.
AW Box (AW & AWML Rod).....	3 (1.4)	002224
NW Box (NW & NWML Rod).....	6 (2.7)	002226

SUB: ROD BOX TO ROD PIN & RECOVERY TAP

Description	Lb/Kg	Part No.
N Box To AW Pin.....	3 (1.4)	001782
N Box To NWL Pin.....	6 (2.7)	80006-02
N Box To NW Pin.....	5 (2.3)	001784
N Box To NWML Pin.....	10 (4.8)	180006-04
NW Box To 2-3/8" (60mm) API Reg Pin.....	9 (4.1)	001708
NW Box To 2-7/8" (73mm) API Reg Pin.....	14 (6.4)	001709
NW Box To 3-1/2" (89mm) API Reg Pin.....	20 (9.1)	001710
NW Box To AW Pin.....	4 (1.8)	001795
NW Box To AWML Pin.....	3 (1.4)	007007
NW Box To BW Pin.....	4 (1.8)	001796
NW Box To N Pin.....	4 (1.8)	179992
NW Box To NWL Pin.....	4 (1.8)	180007-04
NW Box To NWML Pin.....	9 (4.1)	006288
NW Box To NXWL (Christensen) Pin.....	8 (3.6)	180007-05
NWML Box To A Pin.....	4 (1.8)	180012-01
NWML Box To AW Pin.....	4 (1.8)	180012-02
NWML Box To AWML Pin.....	4 (1.8)	180012-06
NWML Box To Boyles NXWL (Christensen) Pin...	5 (2.3)	180012-17
NWML Box To BW Pin.....	4 (1.8)	180012-03
NWML Box To N Pin.....	5 (2.3)	180012-04
NWML Box To NWL Pin.....	5 (2.3)	180012-08
NWML Box To NW Pin.....	5 (2.3)	180012-05
NWML Box To NWML Pin.....	5 (2.3)	180012-14

Other sizes available upon request.

DRAG BIT



4-Wing



3-Wing

Three and four-wing drag bits are used when rotary drilling through hollow stem auger or with standard mud/air rotary functions in formations not requiring hard rock bits. A rod box to rod box sub is required for pin down tool strings, see subs, in this section. Sizes are identified by the hole diameter they drill. Larger sizes available on special order.

Description	Lb/Kg	Part No.
2" (51mm), AW Pin.....	2 (.9)	005725
2-1/4" (57mm), AW Pin.....	2 (.9)	005726
2-1/2" (64mm), AW Pin.....	3 (1.4)	005727
2-3/4" (70mm), AW Pin.....	4 (1.8)	005728
3" (76mm), NW Pin.....	4 (1.8)	006720
3-1/4" (83mm), NW Pin.....	5 (2.3)	006721
3-1/2" (89mm), NW Pin.....	6 (2.7)	006722
3-3/4" (95mm), NW Pin.....	6 (2.7)	006723
4" (102mm), 2-3/8" (60mm) API Reg Pin.....	7 (3.2)	005733
4-1/4" (108mm), 2-3/8" (60mm) API Reg Pin.....	7 (3.2)	005734
4-1/2" (114mm), 2-3/8" (60mm) API Reg Pin.....	8 (3.6)	005735
4-3/4" (121mm), 2-3/8" (60mm) API Reg Pin.....	9 (4.1)	006650
5" (127mm), 2-3/8" (60mm) API Reg Pin.....	14 (6.4)	006651
5-1/4" (133mm), 3-1/2" (89mm) API Reg Pin.....	16 (7.3)	006652
5-1/2" (140mm) API Reg Pin.....	17 (7.7)	006653
5-5/8" (143mm), 3-1/2" (89mm) API Reg Pin.....	18 (8.2)	006654
6" (152mm), 3-1/2" (89mm) API Reg Pin.....	19 (8.6)	006655
2" (51mm), AW Pin.....	2 (.9)	005708
2-1/4" (57mm), AW Pin.....	2 (.9)	005709
2-1/2" (64mm), AW Pin.....	3 (1.4)	005710
2-3/4" (70mm), AW Pin.....	4 (1.8)	005711
3" (76mm), NW Pin.....	5 (2.3)	006724
3-1/4" (83mm), NW Pin.....	6 (2.7)	006725
3-1/2" (89mm), NW Pin.....	6 (2.7)	006726
3-3/4" (95mm), NW Pin.....	7 (3.2)	006727
4" (102mm), 2-3/8" (60 mm) API Reg Pin.....	8 (3.6)	005716
4-1/4" (108mm), 2-3/8" (60mm) API Reg Pin.....	9 (4.1)	005717
4-1/2" (114mm), 2-3/8" (60 mm) API Reg Pin.....	10 (4.5)	005718
4-3/4" (121mm), 2-3/8" (60mm) API Reg Pin.....	11 (5)	006661
5" (127mm), 2-3/8" (60mm) API Reg Pin.....	17 (7.7)	006662
5-1/4" (133mm), 3-1/2" (89mm) API Reg Pin.....	19 (8.6)	006663
5-1/2" (140mm), 3-1/2" (89mm) API Reg Pin.....	19 (8.6)	006664
5-5/8" (143mm), 3-1/2" (89mm) API Reg Pin.....	20 (9.1)	006665
6" (152mm), 3-1/2" (89mm) API Reg Pin.....	21 (9.5)	006666

Key: * Designates weights less than 1 lb (.5kg)

† Consult Factory

5

3-CONE ROLLER ROCK CHISEL BIT



4-Wing



3-Wing

Important: When ordering, be sure to specify A or D type formations to be drilled:

- A** = soft formations of shale, anhydrites, gypsum, talc, chalk-fast cutting.
- D** = hard formations such as limestone, cherry limestone, dolomite and abrasive sandstone.

For water drilling specify "Fluid Type" or for air drilling specify "Air Flush." A Rod Box To Rod Box Sub is required for pin down tool strings, see Subs in this section. Sizes are identified by the hole diameter they drill. Other sizes and formation types available upon request.

Description	Lb/Kg	Part No.
2-7/8" (73mm), NW Pin	3 (1.4)	006728
2-15/16" (75mm), NW Pin	3 (1.4)	006729
3-1/8" (79mm), NW Pin	4 (1.8)	006730
3-1/4" (83mm), NW Pin	5 (2.3)	006731
3-1/2" (89mm), 2-3/8" (60mm) API Reg Pin	4 (1.8)	005746
3-3/4" (95mm), 2-3/8" (60mm) API Reg Pin	6 (2.7)	001525
3-7/8" (98mm), 2-3/8" (60mm) API Reg Pin	3 (1.4)	005747
4-1/4" (108mm), 2-3/8" (60mm) API Reg Pin	9 (4.1)	001526
4-1/2" (89mm), 2-3/8" (60mm) API Reg Pin	10 (4.5)	005750
4-3/4" (121mm), 2-7/8" (73mm) API Reg Pin	14 (6.4)	001527
5-5/8" (143mm), 3-1/2" (89mm) API Reg Pin	21 (9.5)	001528
6-1/4" (89mm), 2-3/8" (60mm) API Reg Pin	26 (11.8)	001529

3-CONE TUNGSTEN CARBIDE ROLLER BIT



Tough roller cone rock bits with carbide inserts set in a heat-treated body. Available with chisel buttons (shown) and dome buttons. For water drilling specify "Fluid Type" or for air drilling specify "Air Flush." Rod Box To Rod Box Adapters are required for pin down tool strings, see Adapters in this section. Sizes are identified by the hole diameter they drill.

FLUID FLUSH TYPE

Description	Lb/Kg	Part No.
3" (76mm), Chisel, NW Pin	3 (1.4)	180379-02
3-1/8" (79mm), Chisel, NW Pin	4 (1.8)	180379-03
3-1/4" (83mm), Chisel, NW Pin	3 (1.4)	180379-04
2-15/16" (75mm), Small Dome, NW Pin	3 (1.4)	180381-01
3" (76mm), Small Dome, NW Pin	3 (1.4)	180381-02
3-1/8" (79mm), Small Dome, NW Pin	4 (1.8)	180381-03
3-1/4" (83mm), Small Dome, NW Pin	3 (1.4)	180381-04
2-15/16" (75mm), Medium Dome, NW Pin	3 (1.4)	180380-01
3" (76mm), Medium Dome, NW Pin	3 (1.4)	180380-02
3-1/8" (79mm), Medium Dome, NW Pin	4 (1.8)	180380-03
3-1/4" (83mm), Medium Dome, NW Pin	3 (1.4)	180380-04
3-1/2" (89mm), Chisel, 2-3/8" (60mm) API Reg Pin	4 (1.8)	180379-05
3-3/4" (95mm), Chisel, 2-3/8" (60mm) API Reg Pin	6 (2.7)	180379-06
3-7/8" (98mm), Chisel, 2-3/8" (60mm) API Reg Pin	6 (2.7)	180379-07
4" (102mm), Chisel, 2-3/8" (60mm) API Reg Pin	8 (3.6)	180379-08
4-1/8" (105mm), Chisel, 2-3/8" (60mm) API Reg Pin	8 (3.6)	180379-09
4-1/4" (108mm), Chisel, 2-3/8" (60mm) API Reg Pin	9 (4.1)	180379-10
4-1/2" (114mm), Chisel, 2-3/8" (60mm) API Reg Pin	9 (4.1)	180379-11
3-1/2" (89mm), Small Dome, 2-3/8" (60mm) API Reg Pin	4 (1.8)	180381-05
3-3/4" (95mm), Small Dome, 2-3/8" (60mm) API Reg Pin	6 (2.7)	180381-06
3-7/8" (98mm), Small Dome, 2-3/8" (60mm) API Reg Pin	6 (2.7)	180381-07
4" (102mm), Small Dome, 2-3/8" (60mm) API Reg Pin	8 (3.6)	180381-08
4-1/8" (105mm), Small Dome, 2-3/8" (60mm) API Reg Pin	8 (3.6)	180381-09
4-1/4" (108mm), Small Dome, 2-3/8" (60mm) API Reg Pin	9 (4.1)	180381-10

Continued on next page

DRILL ROD, SUBS, ROTARY TOOLS, AND BITS

5

4-1/2" (114mm), Small Dome, 2-3/8" (60mm) API Reg Pin	9 (4.1).....	180381-11
3-1/2" (89mm), Medium Dome, 2-3/8" (60mm) API Reg Pin	4 (1.8).....	180380-05
3-3/4" (95mm), Medium Dome, 2-3/8" (60mm) API Reg Pin	6 (2.7).....	180380-06
3-7/8" (98mm), Medium Dome, 2-3/8" (60mm) API Reg Pin	6 (2.7).....	180380-07
4" (102mm), Medium Dome, 2-3/8" (60mm) API Reg Pin	8 (3.6).....	180380-08
4-1/8" (105mm), Medium Dome, 2-3/8" (60mm) API Reg Pin	8 (3.6).....	180380-09
4-1/4" (108mm), Medium Dome, 2-3/8" (60mm) API Reg Pin	9 (4.1).....	180380-10
4-1/2" (114mm), Medium Dome, 2-3/8" (60mm) API Reg Pin	9 (4.1).....	180380-11
4-3/4" (121mm), Chisel, 2-7/8" (73mm) API Reg Pin	11 (5).....	180379-12
4-7/8" (124mm), Chisel, 2-7/8" (73mm) API Reg Pin	14 (6.4).....	180379-13
5" (127mm), Chisel, 2-7/8" (73mm) API Reg Pin	19 (8.6).....	180379-14
5-1/8" (130mm), Chisel, 2-7/8" (73mm) API Reg Pin	21 (9.5).....	180379-15
4-3/4" (121mm), Small Dome, 2-7/8" (73mm) API Reg Pin	11 (5).....	180381-12
4-7/8" (124mm), Small Dome, 2-7/8" (73mm) API Reg Pin	14 (6.4).....	180381-13
5" (127mm), Small Dome, 2-7/8" (73mm) API Reg Pin	19 (8.6).....	180381-14
5-1/8" (130mm), Small Dome, 2-7/8" (73mm) API Reg Pin	21 (9.5).....	180381-15
4-3/4" (121mm), Medium Dome, 2-7/8" (73mm) API Reg Pin	11 (5).....	180380-12
4-7/8" (124mm), Medium Dome, 2-7/8" (73mm) API Reg Pin	14 (6.4).....	180380-13
5" (127mm), Medium Dome, 2-7/8" (73mm) API Reg Pin	19 (8.6).....	180380-14
5-1/8" (130mm), Medium Dome, 2-7/8" (73mm) API Reg Pin	21 (9.5).....	180380-15
5-5/8" (143mm), Chisel, 3-1/2" (89mm) API Reg Pin	22 (10).....	180379-16
6" (152mm), Chisel, 3-1/2" (89mm) API Reg Pin	23 (10.4).....	180379-17
6-1/8" (156mm), Chisel, 3-1/2" (89mm) API Reg Pin	24 (10.9).....	180379-18
6-1/4" (159mm), Chisel, 3-1/2" (89mm) API Reg Pin	26 (11.8).....	180379-19
5-5/8" (143mm), Small Dome, 3-1/2" (89mm) API Reg Pin	22 (10).....	180381-16
6" (152mm), Small Dome, 3-1/2" (89mm) API Reg Pin	23 (10.4).....	180381-17
6-1/8" (156mm), Small Dome, 3-1/2" (89mm) API Reg Pin	24 (10.9).....	180381-18
6-1/4" (159mm), Small Dome, 3-1/2" (89mm) API Reg Pin	26 (11.8).....	180381-19
5-5/8" (143mm), Medium Dome, 3-1/2" (89mm) API Reg Pin	22 (10).....	180380-16
6" (152mm), Medium Dome, 3-1/2" (89mm) API Reg Pin	23 (10.4).....	180380-17
6-1/8" (156mm), Medium Dome, 3-1/2" (89mm) API Reg Pin	24 (10.9).....	180380-18
6-1/4" (159mm), Medium Dome, 3-1/2" (89mm) API Reg Pin	26 (11.8).....	180380-19

AIR FLUSH TYPE

Description	Lb/Kg	Part No.
2-15/16" (75mm), Chisel, NW Pin	3 (1.4).....	180382-01
3" (76mm), Chisel, NW Pin	3 (1.4).....	180382-02
3-1/8" (79mm), Chisel, NW Pin	4 (1.8).....	180382-03
3-1/4" (83mm), Chisel, NW Pin	3 (1.4).....	180382-04
2-15/16" (75mm), Small Dome, NW Pin	3 (1.4).....	180384-01
3" (76mm), Small Dome, NW Pin	3 (1.4).....	180384-02
3-1/8" (79mm), Small Dome, NW Pin	4 (1.8).....	180384-03
3-1/4" (83mm), Small Dome, NW Pin	3 (1.4).....	180384-04
2-15/16" (75mm), Medium Dome, NW Pin	3 (1.4).....	180383-01
3" (76mm), Medium Dome, NW Pin	3 (1.4).....	180383-02
3-1/8" (79mm), Medium Dome, NW Pin	4 (1.8).....	180383-03
3-1/4" (83mm), Medium Dome, NW Pin	3 (1.4).....	180383-04
3-1/2" (89mm), Chisel, 2-3/8" (60mm) API Reg Pin	4 (1.8).....	180382-05
3-3/4" (95mm), Chisel, 2-3/8" (60mm) API Reg Pin	6 (2.7).....	180382-06
3-7/8" (98mm), Chisel, 2-3/8" (60mm) API Reg Pin	6 (2.7).....	180382-07
4" (102mm), Chisel, 2-3/8" (60mm) API Reg Pin	8 (3.6).....	180382-08
4-1/8" (105mm), Chisel, 2-3/8" (60mm) API Reg Pin	8 (3.6).....	180382-09
4-1/4" (108mm), Chisel, 2-3/8" (60mm) API Reg Pin	9 (4.1).....	180382-10
4-1/2" (114mm), Chisel, 2-3/8" (60mm) API Reg Pin	9 (4.1).....	180382-11
3-1/2" (89mm), Small Dome, 2-3/8" (60mm) API Reg Pin	4 (1.8).....	180384-05
3-3/4" (95mm), Small Dome, 2-3/8" (60mm) API Reg Pin	6 (2.7).....	180384-06
3-7/8" (98mm), Small Dome, 2-3/8" (60mm) API Reg Pin	6 (2.7).....	180384-07
4" (102mm), Small Dome, 2-3/8" (60mm) API Reg Pin	8 (3.6).....	180384-08
4-1/8" (105mm), Small Dome, 2-3/8" (60mm) API Reg Pin	8 (3.6).....	180384-09
4-1/4" (108mm), Small Dome, 2-3/8" (60mm) API Reg Pin	9 (4.1).....	180384-10
4-1/2" (114mm), Small Dome, 2-3/8" (60mm) API Reg Pin	9 (4.1).....	180384-11
3-1/2" (89mm), Medium Dome, 2-3/8" (60mm) API Reg Pin	4 (1.8).....	180383-05
3-3/4" (95mm), Medium Dome, 2-3/8" (60mm) API Reg Pin	6 (2.7).....	180383-06
3-7/8" (98mm), Medium Dome, 2-3/8" (60mm) API Reg Pin	6 (2.7).....	180383-07
4" (102mm), Medium Dome, 2-3/8" (60mm) API Reg Pin	8 (3.6).....	180383-08
4-1/8" (105mm), Medium Dome, 2-3/8" (60mm) API Reg Pin	8 (3.6).....	180383-09
4-1/4" (108mm), Medium Dome, 2-3/8" (60mm) API Reg Pin	9 (4.1).....	180383-10
4-1/2" (114mm), Medium Dome, 2-3/8" (60mm) API Reg Pin	9 (4.1).....	180383-11
4-3/4" (121mm), Chisel, 2-7/8" (73mm) API Reg Pin	11 (5).....	180382-12
4-7/8" (124mm), Chisel, 2-7/8" (73mm) API Reg Pin	14 (6.4).....	180382-13
5" (127mm), Chisel, 2-7/8" (73mm) API Reg Pin	19 (8.6).....	180382-14

Continued on next page

Key: * Designates weights less than 1 lb (.5kg)

† Consult Factory

5-11

DRILL ROD, SUBS, ROTARY TOOLS, AND BITS

5

5-1/8" (130mm), Chisel,		
2-7/8" (73mm) API Reg Pin.....	21 (9.5).....	180382-15
4-3/4" (121mm), Small Dome,		
2-7/8" (73mm) API Reg Pin.....	11 (5).....	180384-12
4-7/8" (124mm), Small Dome,		
2-7/8" (73mm) API Reg Pin.....	14 (6.4).....	180384-13
5" (127mm), Small Dome,		
2-7/8" (73mm) API Reg Pin.....	19 (8.6).....	180384-14
5-1/8" (130mm), Small Dome,		
2-7/8" (73mm) API Reg Pin.....	21 (9.5).....	180384-15
4-3/4" (121mm), Medium Dome,		
2-7/8" (73mm) API Reg Pin.....	11 (5).....	180383-12
4-7/8" (124mm), Medium Dome,		
2-7/8" (73mm) API Reg Pin.....	14 (6.4).....	180383-13
5" (127mm), Medium Dome,		
2-7/8" (73mm) API Reg Pin.....	19 (8.6).....	180383-14
5-1/8" (130mm), Medium Dome,		
2-7/8" (73mm) API Reg Pin.....	21 (9.5).....	180383-15
5-5/8" (143mm), Chisel,		
3-1/2" (89mm) API Reg Pin.....	22 (10).....	180382-16
6" (152mm), Chisel,		
3-1/2" (89mm) API Reg Pin.....	23 (10.4).....	180382-17
6-1/8" (156mm), Chisel,		
3-1/2" (89mm) API Reg Pin.....	24 (10.9).....	180382-18
6-1/4" (159mm), Chisel,		
3-1/2" (89mm) API Reg Pin.....	26 (11.8).....	180382-19
5-5/8" (143mm), Small Dome,		
3-1/2" (89mm) API Reg Pin.....	22 (10).....	180384-16
6" (152mm), Small Dome,		
3-1/2" (89mm) API Reg Pin.....	23 (10.4).....	180384-17
6-1/8" (156mm), Small Dome,		
3-1/2" (89mm) API Reg Pin.....	24 (10.9).....	180384-18
6-1/4" (159mm), Small Dome,		
3-1/2" (89mm) API Reg Pin.....	26 (11.8).....	180384-19
5-5/8" (143mm), Medium Dome,		
3-1/2" (89mm) API Reg Pin.....	22 (10).....	180383-16
6" (152mm), Medium Dome,		
3-1/2" (89mm) API Reg Pin.....	23 (10.4).....	180383-17
6-1/8" (156mm), Medium Dome,		
3-1/2" (89mm) API Reg Pin.....	24 (10.9).....	180383-18
6-1/4" (159mm), Medium Dome,		
3-1/2" (89mm) API Reg Pin.....	26 (11.8).....	180383-19